

LIRJ

Elev 31' / 9 m

N42 45.7
E010 14.4

Elba
ITALY
1 NM NE Marina di Campo

(AFIS)

MARINA DI CAMPO INFORMATION **123.70** (it, en)

| | | | |
|-----|-----|-----|-----|
| RWY | ILS | RWY | ILS |
| | | | |

SCALE 1:100 000



MARINA DI CAMPO

MARINA DI CAMPO

ITALY, Elba

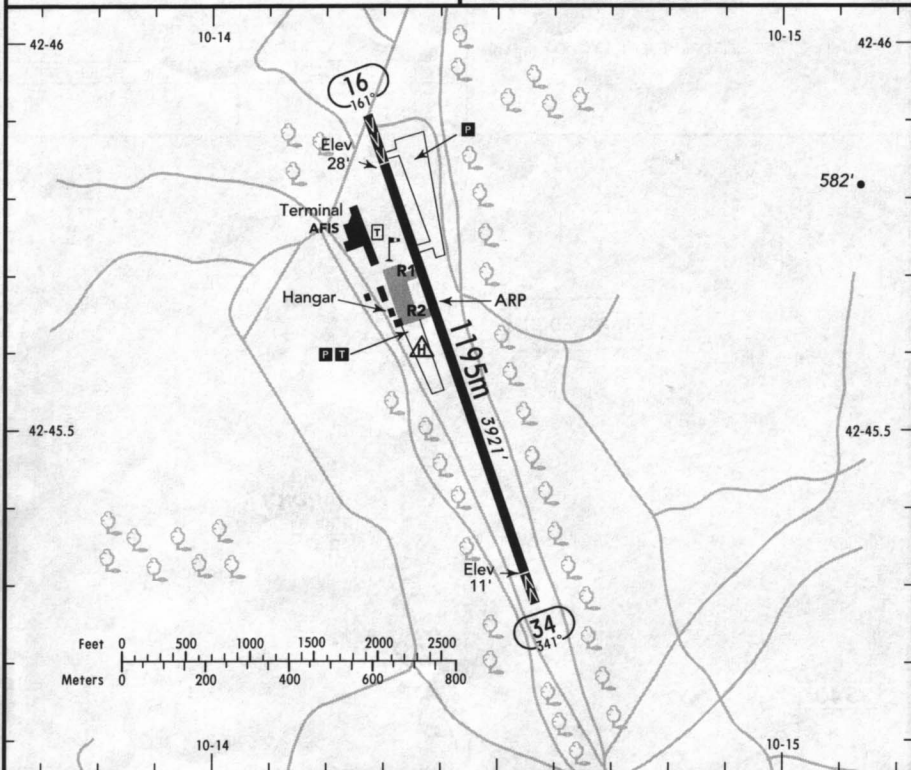
19-2 7 MAR 03

JEPPESEN



(FIS)

ROMA INFORMATION 125.75



Scooters Bicycles



| RWY No | Dimension (m) - Surface | TORA (m) | LDA (m) | Strength | Lights |
|--------|-------------------------|----------|---------|----------------|--------|
| 16 | 1195 x 23 Asphalt | 1195 | 1072 | PCN 12/F/C/W/U | — |
| 34 | | 1195 | 1115 | | |

Caution: APCH RWY 16: High terrain when approaching via *GUARDIOLA*.
 DEP RWY 34: Suggested TKOF path requires a MNM climb gradient of 5% to overfly obstacles.
 On approach establish radio contact with AFIS well prior to reaching the ATZ.
 Avoid overflying build-up areas near AD.