

ESSU/EKT **JEPPESEN** **ESKILSTUNA, SWEDEN**
ESKILSTUNA AB 3 DEC 04 (16-1) **CAT A, B & C** **NDB DME Rwy 18**

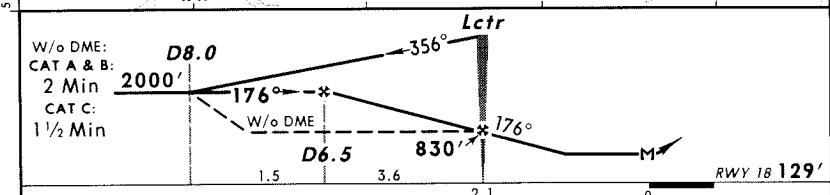
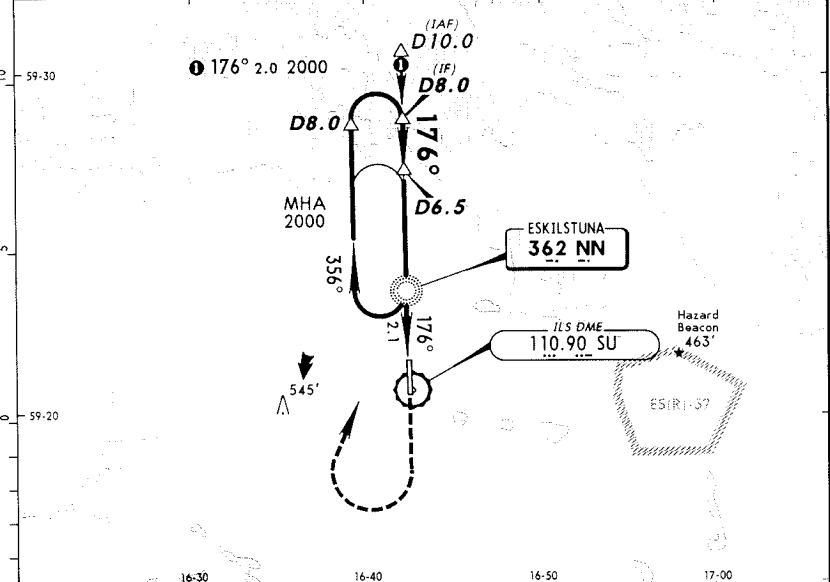
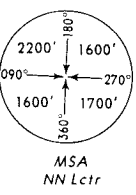
*ESKILSTUNA Information

126.85

Lctr NN 362	Final Apch Crs 176°	With DME Minimum Alt D6.5 2000' (1871')	MDA(H) 550' (421')	Apt Elev 139'
		W/o DME Minimum Alt Lctr 830' (701')		

MISSED APCH: Climb STRAIGHT AHEAD to 1200', then turn RIGHT to Lctr climbing to 2000'.

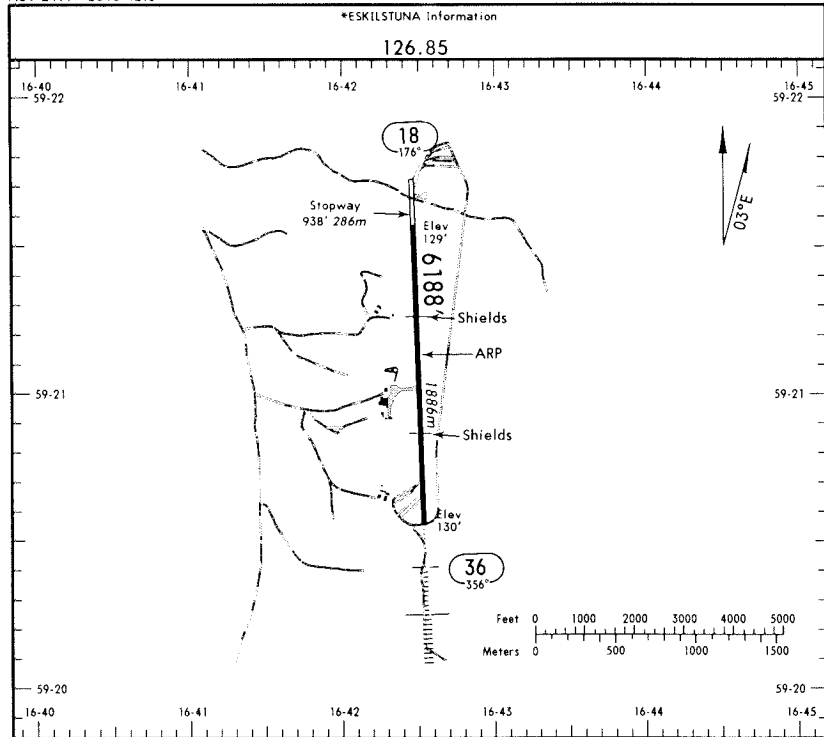
Alt Set: hPa Rwy Elev: 5 hPa Trans level: By ATC Trans alt: 5000'



Gnd speed-Kts	70	90	100	120	140	160	APAPI-L	1200'
Descent Gradient 5.2%	369	474	527	632	738	843		
Lctr to MAP	2.1	1:48	1:24	1:16	1:03	0:54		

JAR-OPS		STRAIGHT-IN LANDING RWY 18		CIRCLE-TO-LAND	
	MDA(H) 550' (421')	Max Kts	MDA(H)	VIS	
A	RVR 1500m	100	610' (471')	1500m	
B		135	660' (521')	1600m	
C	RVR 1800m	180	940' (801')	2400m	
D	NOT APPLICABLE	D	NOT APPLICABLE		

ESSU/EKT **JEPPESEN** ESKILSTUNA, SWEDEN
 Apt Elev 139' 3 DEC 04 (10-9) ESKILSTUNA AB



GENERAL
 Arresting net beyond end of rwy 18 raised outside ATS hrs. Helicopter operations on rwy 18/36.

RWY	USABLE LENGTHS		TAKE-OFF	WIDTH
	Threshold	Glide Slope		
18	RL (60m) APAPI-L (angle 2.86°)		②	115'
36	① HIRL (60m) ① HIALS APAPI-L (angle 3.0°)	5398' 1645m		35m

- ① Activate low intensity lights on 126.85. Key mike continuously 10 sec.
- ② Starter extension 938'/286m in day light VMC available.

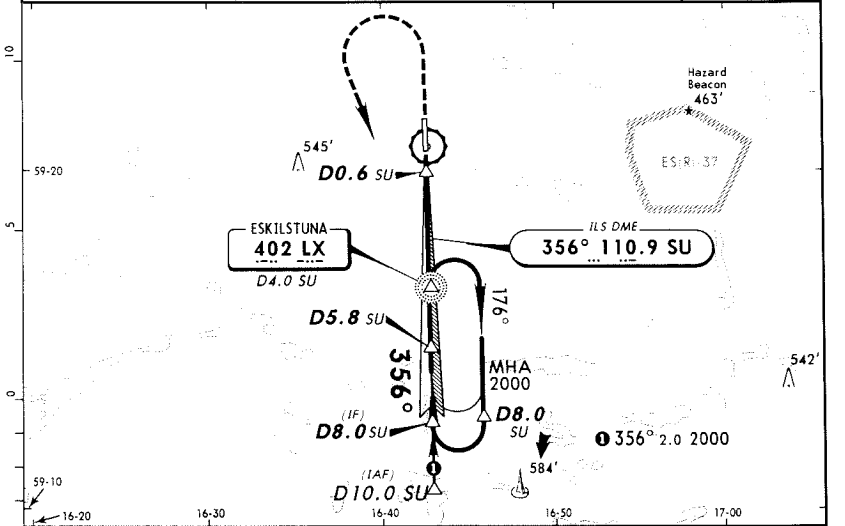
JAR-OPS TAKE-OFF ① & DEPARTURE PROCEDURE

All Rwys		
LVP must be in Force		
RCLM (DAY only) or RL	RCLM (DAY only) or RL	NIL (DAY only)
A	250m	400m
B		500m
C		
D	NOT APPLICABLE	

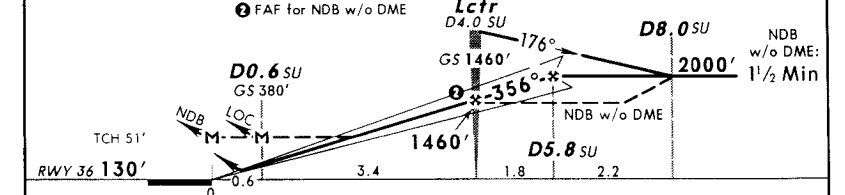
① Operators applying U.S. Ops Specs: CL required below 300m.
OMNIDIRECTIONAL DEPARTURE PROCEDURE
 RWY 18: Climb STRAIGHT AHEAD with minimum 350'/NM (5.6%) to minimum turning alt 600'. Continue climb to appropriate MSA.
 RWY 36: Climb STRAIGHT AHEAD with minimum 360'/NM (5.9%) to minimum turning alt 600'. Continue climb to appropriate MSA. (CIO) Close-in obstacle: 279' terrain 004°T/1.1 NM (2100m) from THR.

ESSU/EKT **JEPPESEN** CATA. B & C ESKILSTUNA, SWEDEN
 ESKILSTUNA AB 3 DEC 04 (11-1) NDB ILS DME or NDB DME Rwy 36

*ESKILSTUNA Information				
LOC SU	110.9	GS Lctr	1460' (1330')	ILS DA(H)
Lctr LX	402	Final Apch Crs	356°	330' (200')
		Minimum Alt (CONDITIONAL) Refer to Profile		NDB MDA(H)
				550' (420')
				Apt Elev 139'
				RWY 130'



LOC (GS out) or NDB DME	SU DME	1.0	2.0	3.0	4.0
	ALTITUDE	500'	820'	1140'	1460'



Gnd speed-Kts	70	90	100	120	140	160	HIALS	1200'
ILS GS 3.00° or LOC or NDB Desc Grad 5.2%	377	484	538	646	753	861	APAPI	
NDB: Lctr to MAP	4.0	3:26	2:40	2:24	2:00	1:43	1:30	

JAR-OPS STRAIGHT-IN LANDING RWY 36		NDB		CIRCLE-TO-LAND	
ILS DA(H)	LOC (GS out) MDA(H)	ILS DA(H)	LOC (GS out) MDA(H)	Max Alt	MSA
330' (200')	550' (420')	330' (200')	550' (420')	100	610' (471') 1500m
FULL	ALS out	ALS out	ALS out	135	660' (521') 1600m
A	RVR 900m	RVR 1500m	RVR 900m	180	940' (801') 2400m
B	RVR 550m	RVR 1000m	RVR 1000m		
C		RVR 1000m	RVR 1800m		
D	NOT APPLICABLE		D	NOT APPLICABLE	